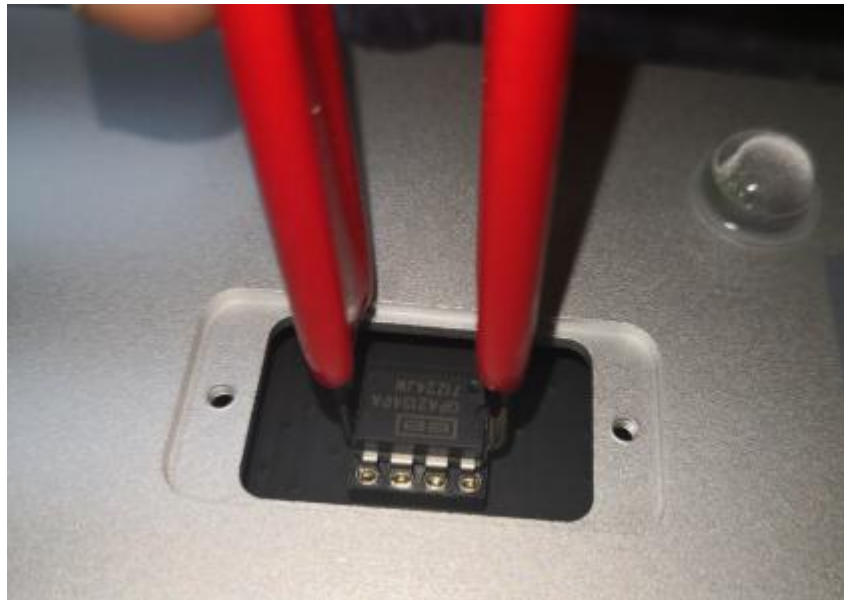


How to Change the Op-Amp of the X8

The aune X8's op-amp is interchangeable (dual op-amp only). The proper way to change the op-amp is detailed below:

- When removing the op-amp, please use the extraction tool in the package to prevent damage to the pins.



- Be careful with the direction. There's a notch or a dot on a side of an op-amp.

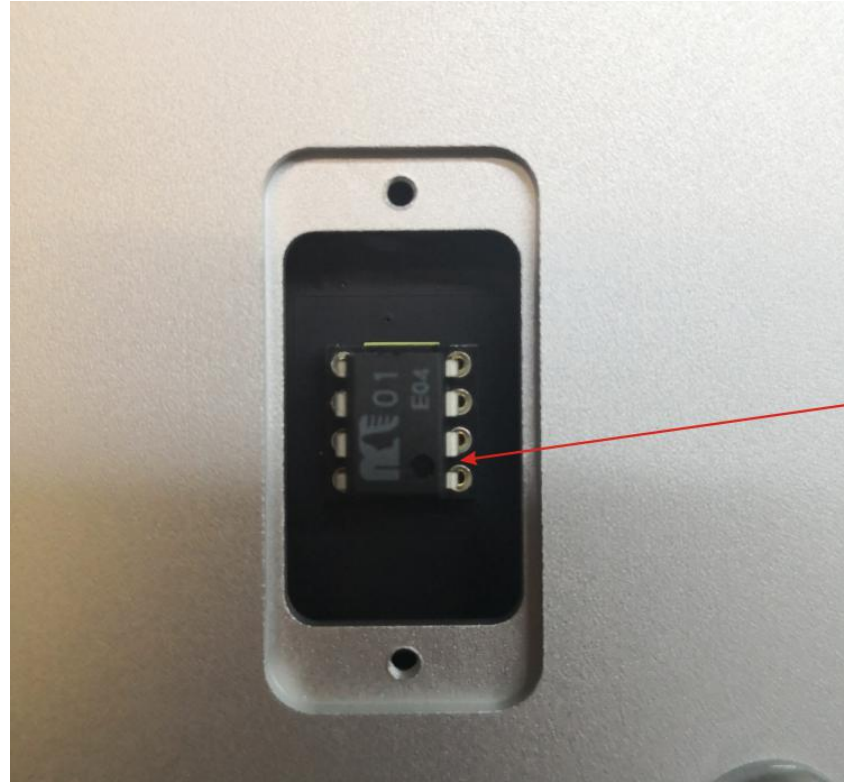


Notch

- The following pictures show four of the recommended op-amps having been inserted in the X8.



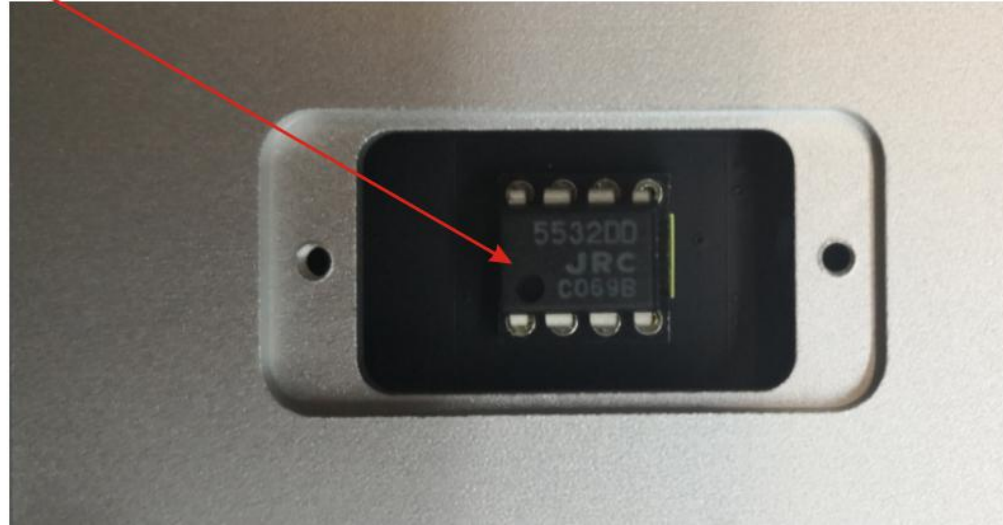
Make sure the notch and dot of the OPA2604 are on the same side with the notch of the socket.



MUSES01

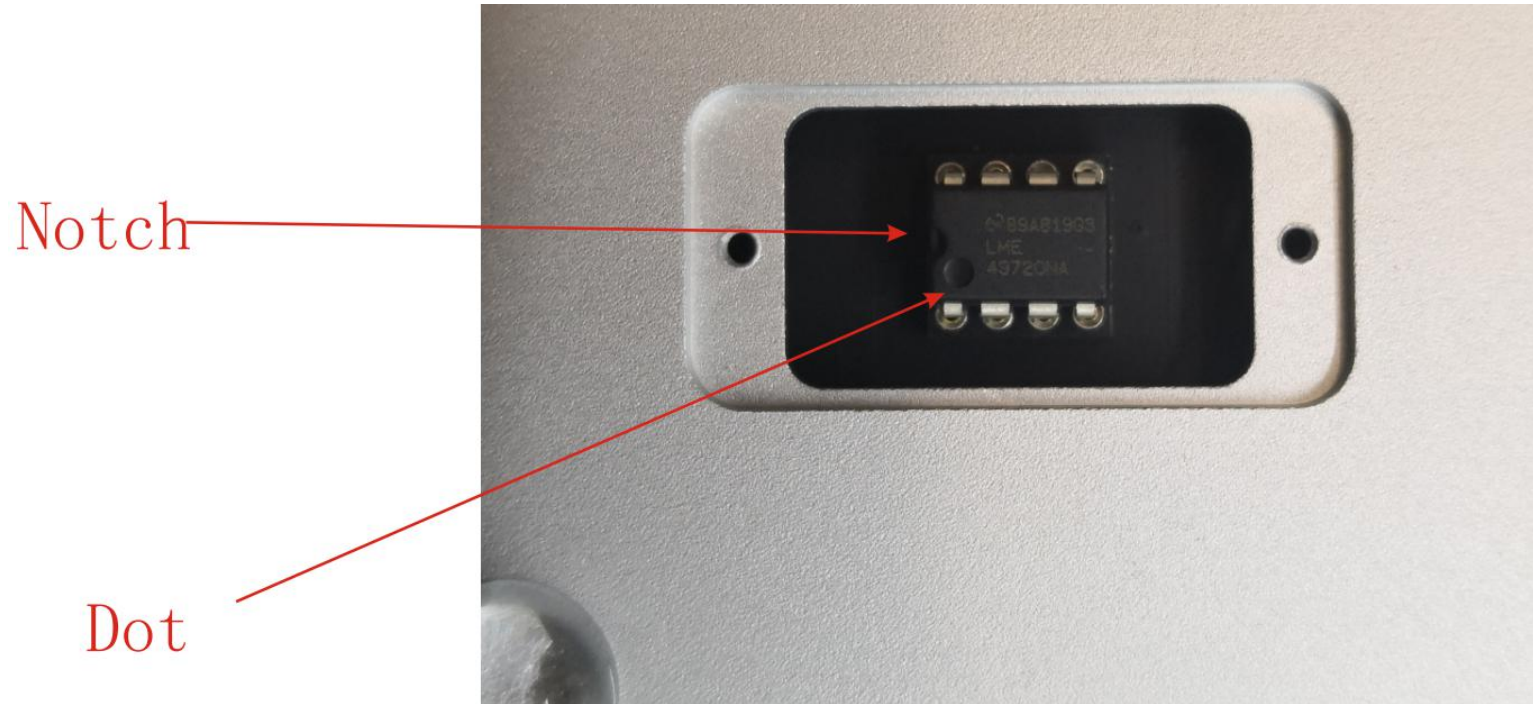
Make sure the dot of the MUSES01 is on the same side with the notch of the socket.

Dot



NJM5532

Make sure the dot of the NJM5532 is on the same side with the notch of the socket.



LME49720

Make sure the notch and dot of the LME49720 are on the same side with the notch of the socket.